

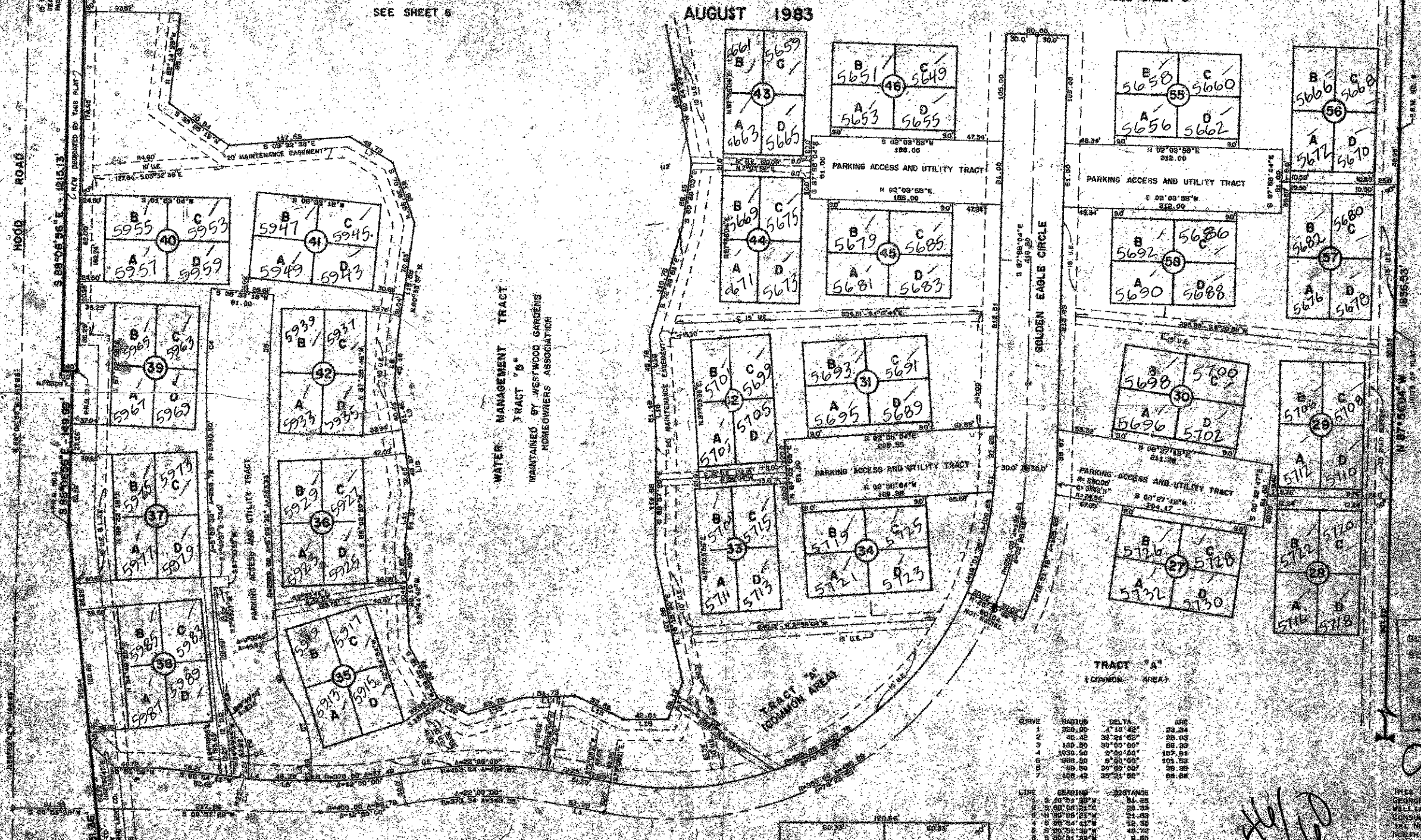
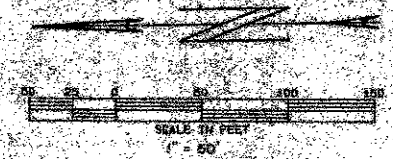
46/160

160

# PLAT NO. 1 WESTWOOD GARDENS (A PUD)

LYING IN SECTION 35, TOWNSHIP 41 SOUTH, RANGE 42 EAST  
PALM BEACH COUNTY, FLORIDA

SHEET 5 OF 6  
AUGUST 1983

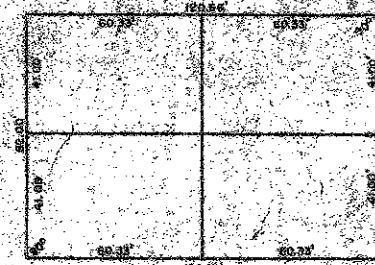


WATER MANAGEMENT TRACT  
TRACT 'B'  
MAINTAINED BY WESTWOOD GARDENS HOMEOWNERS ASSOCIATION

TRACT 'A'  
COMMON AREA

CURVE	RADIUS	DELTA	ARC
1	320.00	18° 42'	29.24
2	45.00	38° 21' 00"	28.03
3	100.00	30° 00' 00"	51.30
4	100.00	2° 00' 00"	107.81
5	100.00	0° 00' 00"	103.53
6	100.00	36° 00' 00"	28.38
7	100.00	36° 00' 00"	66.24

LINE	BEARING	DISTANCE
1	S 10° 00' 00" W	24.35
2	S 89° 00' 00" W	21.42
3	S 89° 00' 00" W	21.42
4	S 89° 00' 00" W	21.42
5	S 89° 00' 00" W	21.42
6	S 89° 00' 00" W	21.42
7	S 89° 00' 00" W	21.42
8	S 89° 00' 00" W	21.42
9	S 89° 00' 00" W	21.42
10	S 89° 00' 00" W	21.42
11	S 89° 00' 00" W	21.42
12	S 89° 00' 00" W	21.42
13	S 89° 00' 00" W	21.42
14	S 89° 00' 00" W	21.42
15	S 89° 00' 00" W	21.42
16	S 89° 00' 00" W	21.42
17	S 89° 00' 00" W	21.42
18	S 89° 00' 00" W	21.42
19	S 89° 00' 00" W	21.42



TYPICAL TOWNHOMES LOT DETAIL

UNPLATTED

0379-001

THIS INSTRUMENT PREPARED BY:  
GERARD E. WILLIAMS  
MILLER & WALLACE, INC.  
SURVEYING ENGINEERS AND LAND SURVEYORS  
301 NORTH LAKE BOULEVARD  
NORTH PALM BEACH, FLORIDA 33408

PLAT NO. 1  
WESTWOOD GARDENS  
(A PUD)

**GERARD E. WILLIAMS, P.E.**  
SURVEYING ENGINEER AND LAND SURVEYOR  
MILLER & WALLACE, INC.  
301 NORTH LAKE BOULEVARD  
NORTH PALM BEACH, FLORIDA 33408

DATE: AUGUST 1983

46/160

SEE SHEET 4

SEE SHEET 6

SEE SHEET 6